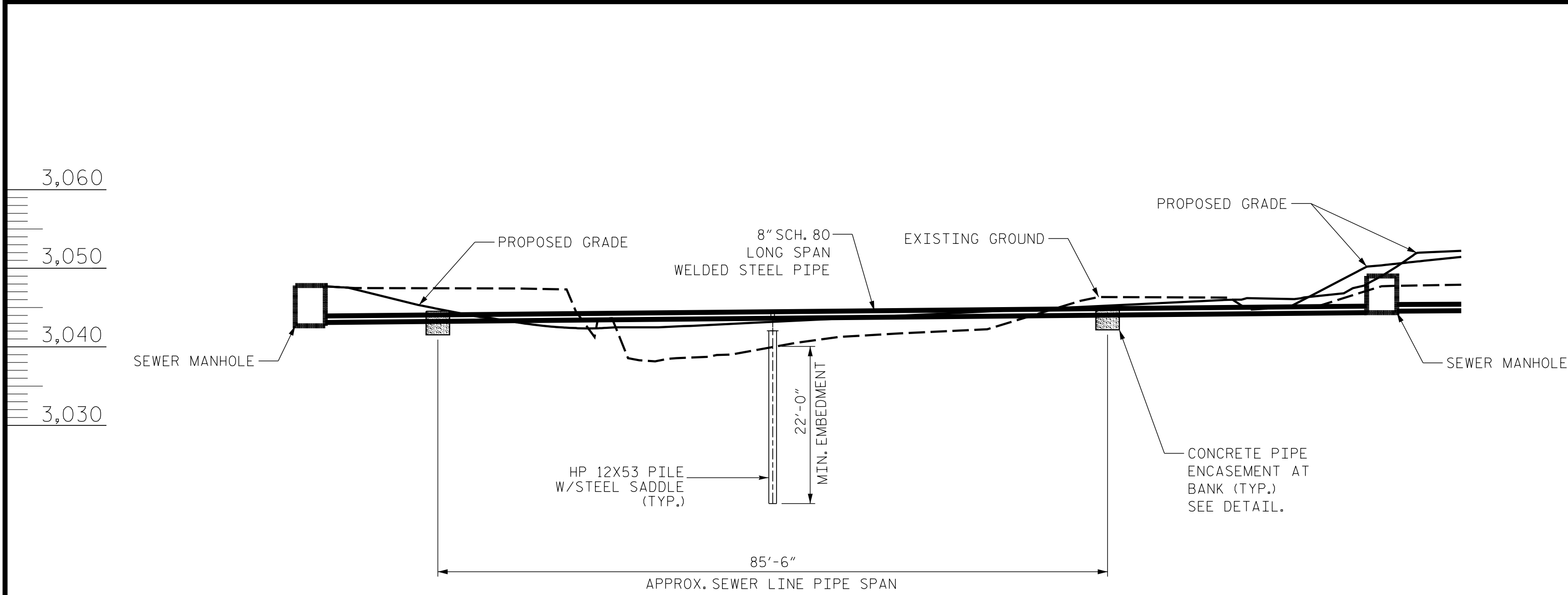
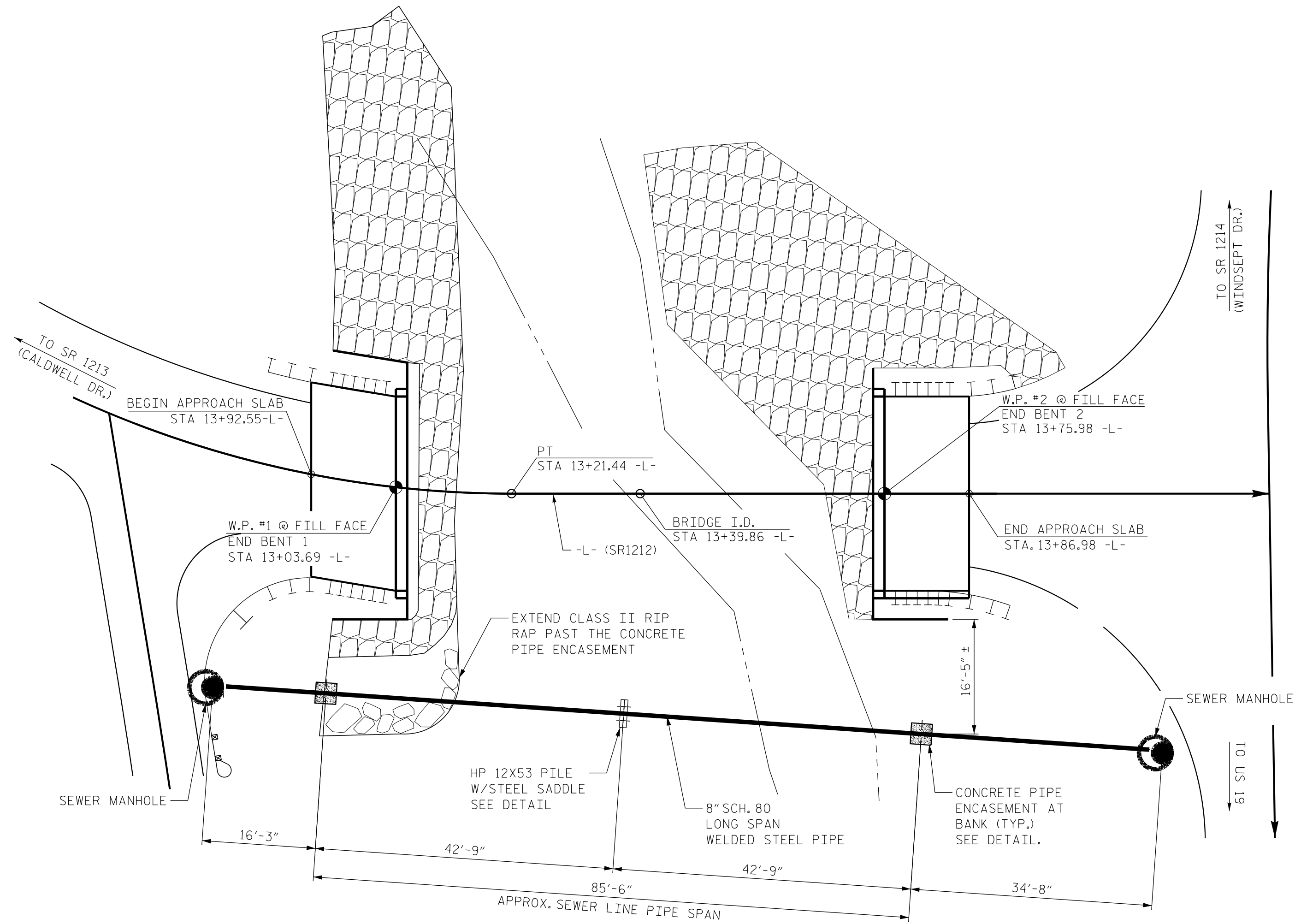


5/14/99

1/7/2026 9:33:42 AM
Elevation.dgn
11:11:11 PM
1/7/2026 9:33:42 AM
Elevation.dgn
11:11:11 PM



ELEVATION VIEW



PLAN VIEW

NOTES:

8" SCH 80 LONG SPAN WELDED STEEL PIPE SHALL BE A MINIMUM OF ASTM A53 GRADE B PIPE, AND SHALL HAVE A MINIMUM YIELD STRENGTH OF 35 KSI.

ALL STRUCTURAL STEEL SHALL BE AASHTO M270 GRADE 50, WITH A MINIMUM OF YIELD STRENGTH OF 50 KSI.

ALL STEEL TO BE HOT DIPPED GALVANIZED, IN ACCORDANCE WITH STANDARD SPECIFICATIONS.

REPAIR ANY GALVANIZED SURFACES, IN ACCORDANCE WITH STANDARD SPECIFICATIONS.

BOLTS, NUTS AND WASHERS, SHALL BE GALVANIZED, IN ACCORDANCE WITH THE STANDARD SPECIFICATIONS.

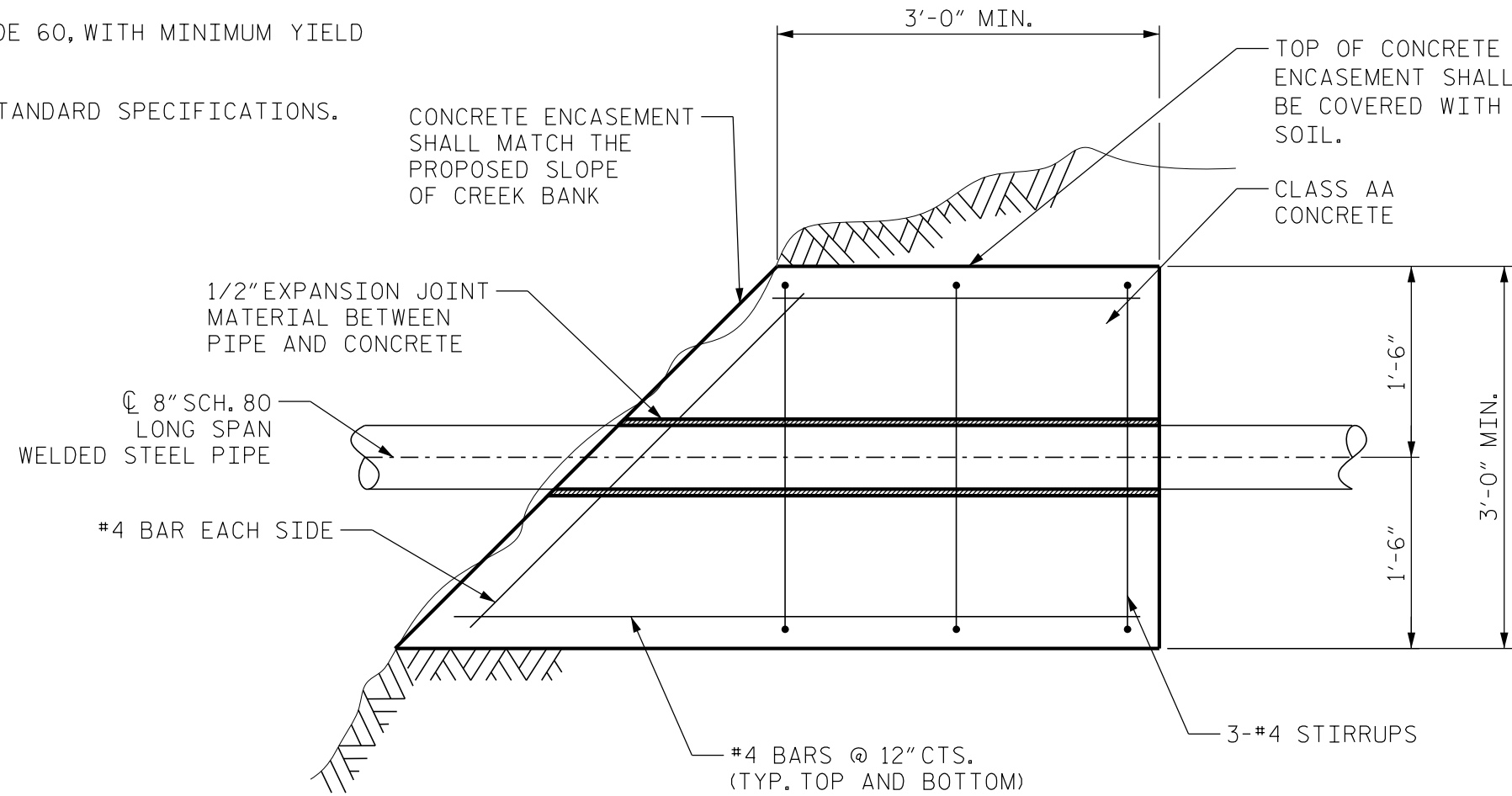
CONCRETE PIPE ENCASEMENT SHALL BE CLASS AA CONCRETE WITH F'c = 4000 PSI.

WELDS SHALL BE SMAW; 70 KSI ELECTRODES. ALL WELDS SHALL BE DONE IN ACCORDANCE WITH STANDARD SPECIFICATIONS

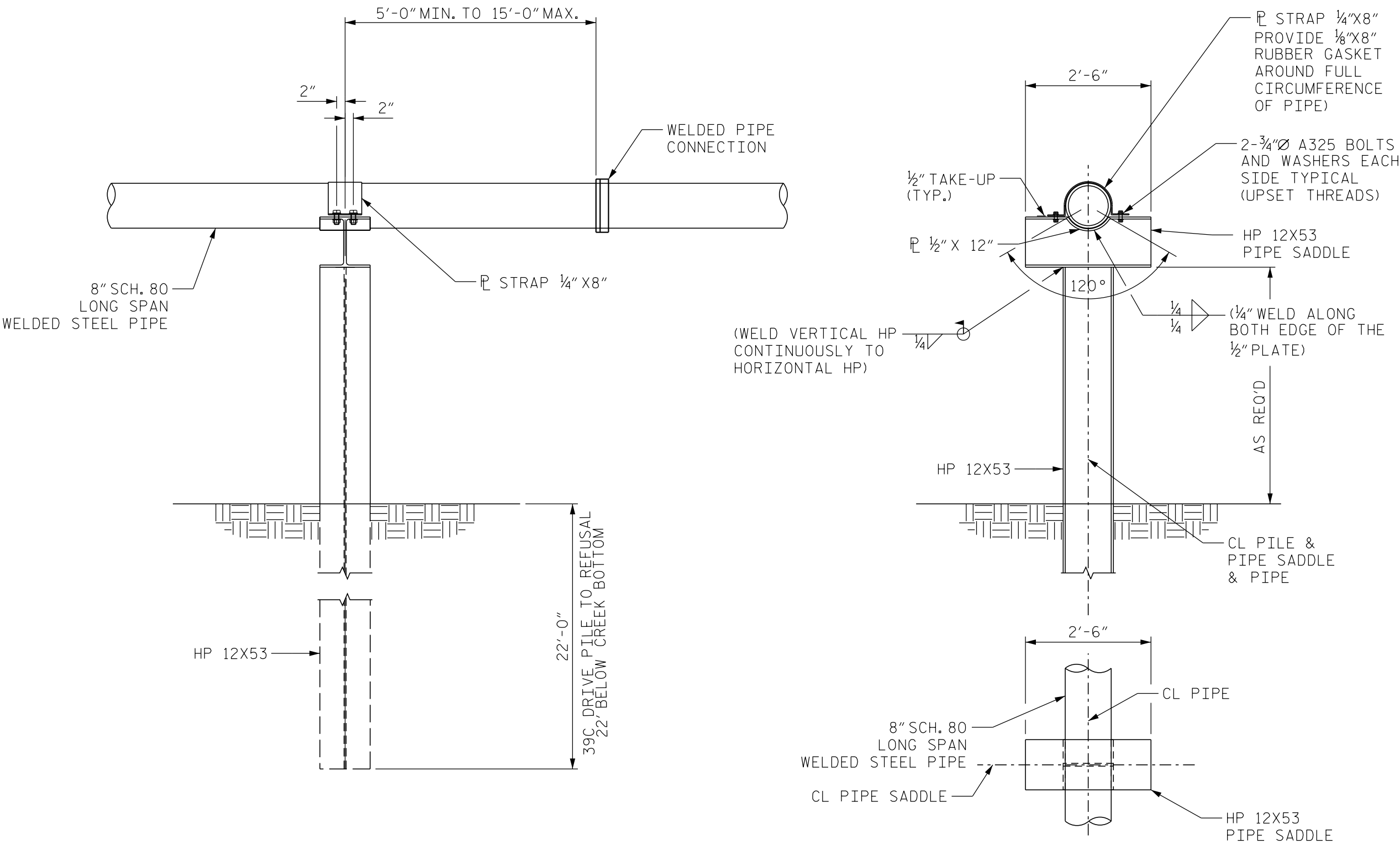
ALL PIPE CONNECTIONS SHALL BE WELDED, IN ACCORDANCE WITH THE STANDARD SPECIFICATIONS.

REINFORCING STEEL SHALL BE GRADE 60, WITH MINIMUM YIELD STRENGTH OF 60 KSI.

FOR PILES, SEE SECTION 450 OF STANDARD SPECIFICATIONS.



PIPE ENCASEMENT AT CREEK BANK DETAIL



AERIAL PIPE SUPPORTS DETAIL

PROJECT REFERENCE NO.		SHEET NO.
DF18314.2044195		UC-3D
DESIGNED BY: WMG		
DRAWN BY: HL		
CHECKED BY: RTS		
APPROVED BY: RTS		
REVISED:		
NORTH CAROLINA DEPARTMENT OF TRANSPORTATION	1/7/2026 TYLER SHIPMAN	1/7/2026 DANIELLE
UTILITIES ENGINEERING SEC. PHONE: (919) 707-6690 FAX: (919) 250-4151		
STRUCTURAL ENGINEER		
UTILITY DESIGN ENGINEER		

UTILITY CONSTRUCTION

DOCUMENT NOT CONSIDERED FINAL
UNLESS ALL SIGNATURES COMPLETED